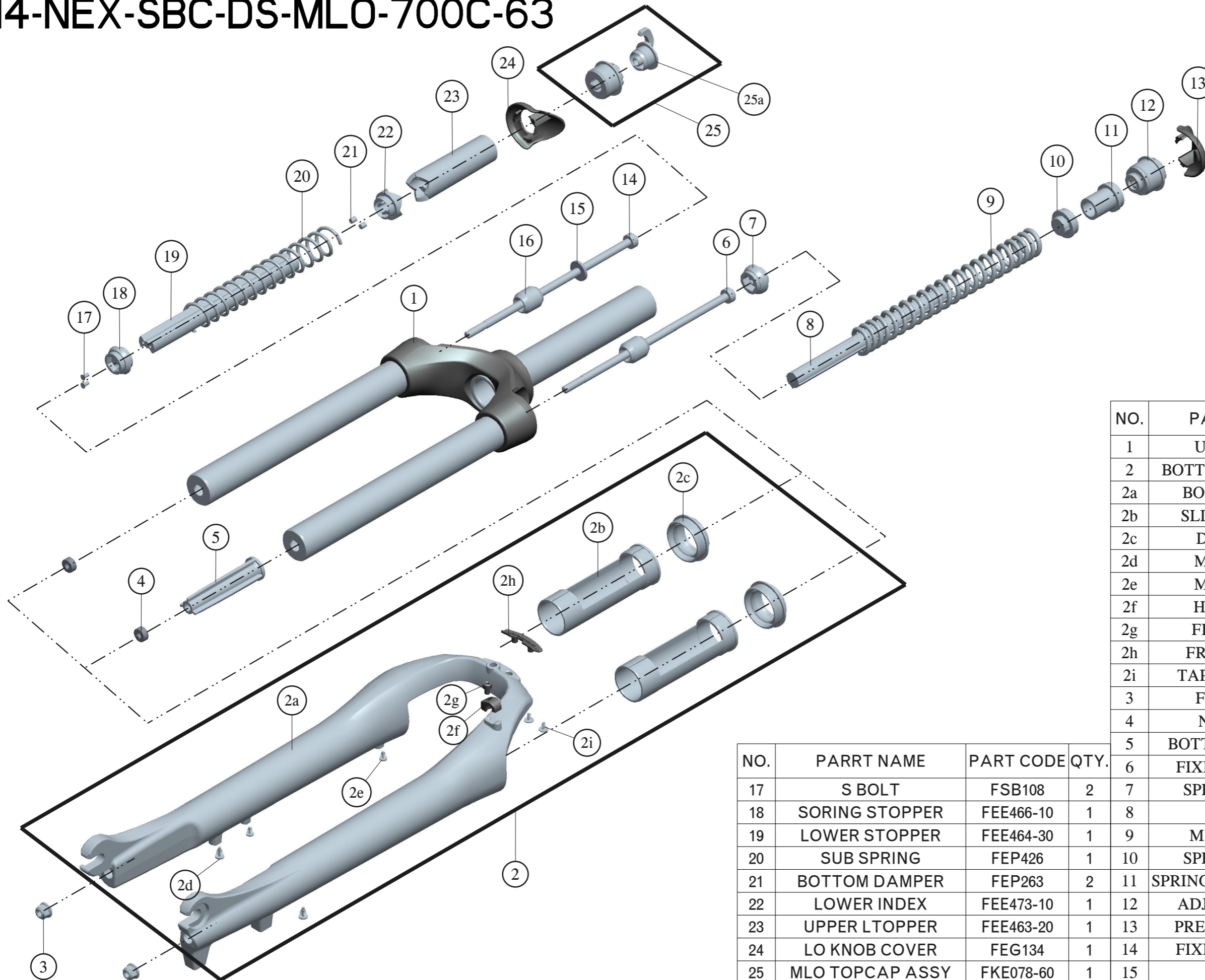


SF14-NEX-SBC-DS-ML0-700C-63



NO.	PARRT NAME	PART CODE	QTY.
1	UPPER ASSY	FKZ024-02	1
2	BOTTOM CASE ASSY	FKZ032-10	1
2a	BOTTOM CASE	FPB366	1
2b	SLIDER SLEEVE	FEE942	2
2c	DUST SEAL	FAA125-40	2
2d	MOUNT CAP	FAA199	2
2e	MOUNT CAP	FAA199-10	2
2f	HOSE GUIDE	FEE797	1
2g	FICING BOLT	FSB153	1
2h	FRACE COVER	FEE716	1
2i	TAPPING SCREW	FSB114-20	2
3	FIXING NUT	FSN023	2
4	NRT PLATE	FSN025-10	2
5	BOTTOM STOPPER	FEG178	1
6	FIXING BOLTL L	FSB159-06	1
7	SPRING GUIDE	FEE468-10	1
8	DAMPER	FEP262-50	1
9	MAIN SPRING	FEP425	1
10	SPRING GUIDE	FEE467-10	1
11	SPRING GUIDE SPACER	FEG033	1
12	ADJUST SYSTEM	FKE213-00	1
13	PRELOAD COVER	FEG113	1
14	FIXING BOLTL R	FSB109-40	1
15	WASHER	FSW003	1
16	RIBOUND RUBBER	FEP086-10	2

NO.	PARRT NAME	PART CODE	QTY.
17	S BOLT	FSB108	2
18	SORING STOPPER	FEE466-10	1
19	LOWER STOPPER	FEE464-30	1
20	SUB SPRING	FEP426	1
21	BOTTOM DAMPER	FEP263	2
22	LOWER INDEX	FEE473-10	1
23	UPPER LTOPPER	FEE463-20	1
24	LO KNOB COVER	FEG134	1
25	MLO TOPCAP ASSY	FKE078-60	1
25a	MLO KNOB	FEG136	1