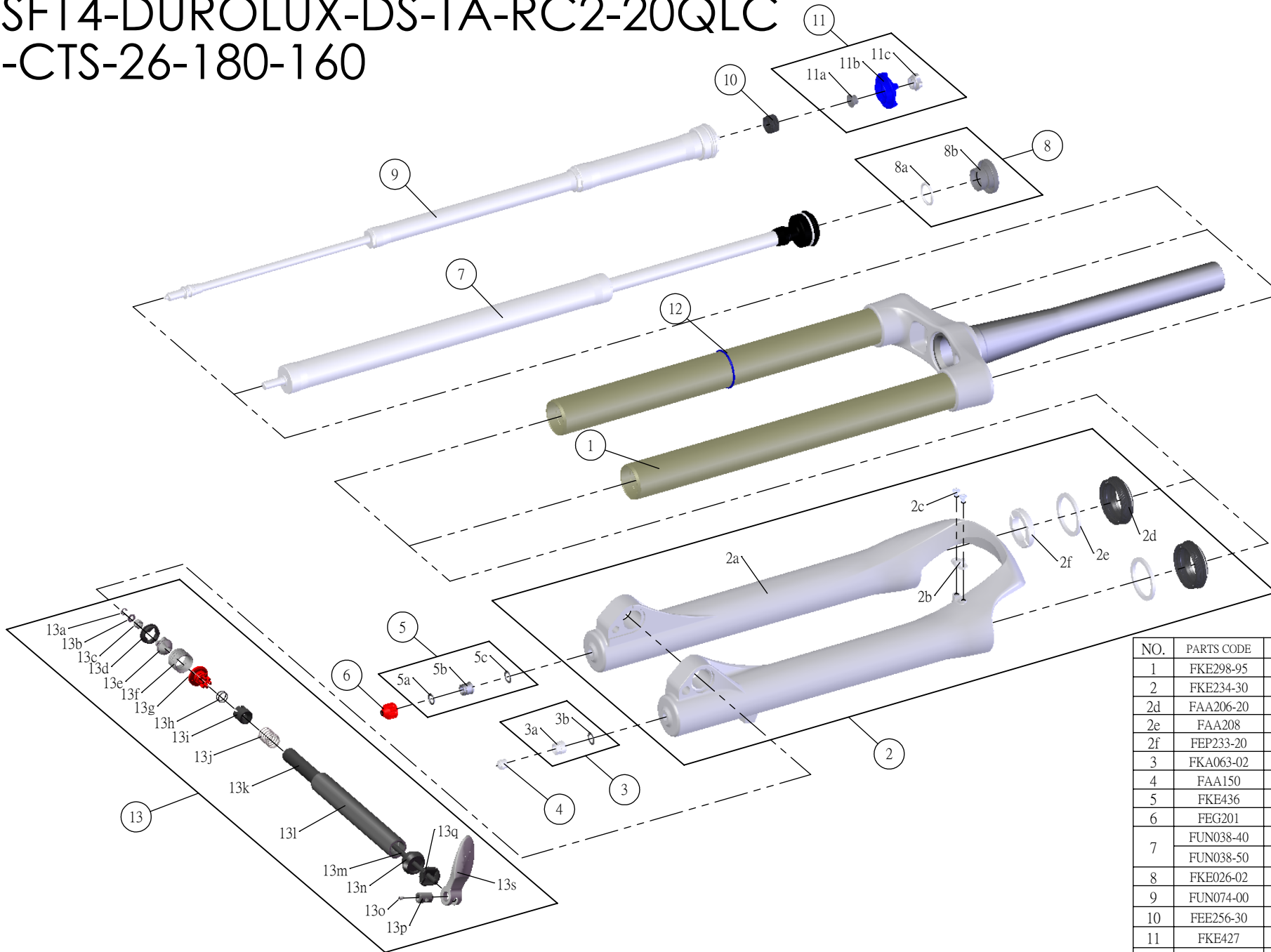


# SF SUNTOUR

|         |            |         |   |
|---------|------------|---------|---|
| Date    | 2013.06.28 | Version | 1 |
| Amended |            |         |   |

## SF14-DUROLUX-DS-TA-RC2-20QLC -CTS-26-180-160



| NO. | PARTS CODE | PARTS NAME        | 160 | 180 | QT |
|-----|------------|-------------------|-----|-----|----|
| 1   | FKE298-95  | UPPER ASSY        | *   | *   | 1  |
| 2   | FKE234-30  | BOTTOM CASE ASSY  | *   | *   | 1  |
| 2d  | FAA206-20  | DUST SEAL         | *   | *   | 2  |
| 2e  | FAA208     | OIL WIPER 35      | *   | *   | 2  |
| 2f  | FEP233-20  | BOTTOM BUMPER     | *   | *   | 1  |
| 3   | FKA063-02  | FIXING NUT SET    | *   | *   | 1  |
| 4   | FAA150     | VALVE CAP         | *   | *   | 1  |
| 5   | FKE436     | FIXING NUT SET    | *   | *   | 1  |
| 6   | FEG201     | REBOUND KNOB      | *   | *   | 1  |
| 7   | FUN038-40  | TA UNIT           |     | *   | 1  |
|     | FUN038-50  | TA UNIT           | *   |     | 1  |
| 8   | FKE026-02  | PUSH BUTTON ASSY  | *   | *   | 1  |
| 9   | FUN074-00  | RC2 UNIT          | *   | *   | 1  |
| 10  | FEE256-30  | ADJUST CORE       | *   | *   | 1  |
| 11  | FKE427     | RC2 ADJUSTER ASSY | *   | *   | 1  |
| 12  | FAA397-10  | O RING            | *   | *   | 1  |
| 13  | FKA068-05  | QLC20 AXLE SET    | *   | *   | 1  |